



PERVAYA MEBELNAYA

Since 1945

Saint Petersburg

OFFICE KITCHEN HOME



TRADITIONAL FURNITURE MAKING

PERVAYA MEBELNAYA FABRIKA is a modern professional furniture making company with a rich history and vast experience. Our commitment to tradition and innovations, and our belief in what we do, helps us create high-quality furniture.

We ensure a faultless appearance, implement any style, and create ideal furniture with a unique design that reflects the individuality of every customer.



CONTENTS

ABOUT THE FACTORY	2
SUMMITS	7
CULTURAL SITES	19
OFFICES	31
HOTELS	43
APARTMENTS	61



AREA 50,000 m²

industrial and warehouse facilities

AUTOMATION

HOMAG, SCHELLING, IMA equipment
automated assembly lines

CAPACITY 50,000

sets of furniture per year

PERVAYA MEBELNAYA FABRIKA

PERVAYA MEBELNAYA FABRIKA WAS FOUNDED IN 1945. OVER SEVEN DECADES THE COMPANY HAS RIGHTLY BECOME THE SYMBOL OF RELIABLE AND HIGH-QUALITY RUSSIAN PRODUCTION AND IS RECOGNISED AS A LEADER ON THE RUSSIAN MARKET FOR FURNITURE AND FURNITURE COMPONENTS.

PERVAYA MEBELNAYA FABRIKA TODAY HAS PRODUCTION FACILITIES COVERING MORE THAN 50,000 m² FOR MAKING MODERN, HIGH-QUALITY FURNITURE FOR OFFICES, SALONS, KITCHENS, HOTELS AND PUBLIC AREAS. THE COMPANY ALSO PRODUCES ITS OWN FURNITURE FACADES AND TABLE TOPS.

MORE THAN 200 PROJECTS HAVE BEEN FULFILLED FOR SUPPLYING FURNITURE FOR STATE AND COMMERCIAL FACILITIES.

AUTOMATED PROCESSES HAVE ENABLED US TO REDUCE PRODUCTION COSTS AND PROVIDE UNIQUE HIGH VALUE OFFERS.

THE COMPANY IS COMMITTED TO ITS PUBLIC ENVIRONMENTAL PROTECTION RESPONSIBILITIES.

SWISS TECHNOLOGY

IN 2014, PERVAYA MEBELNAYA FABRIKA SET UP A JOINT VENTURE CONCERN WITH ALNO, THE SECOND LARGEST FURNITURE COMPANY IN GERMANY AND THE FIFTH LARGEST IN EUROPE.

AS A RESULT, PIATTI (A SWISS SUBSIDIARY) MOVED ITS PRODUCTION TO ST. PETERSBURG, TO THE SITE OF THE PERVAYA MEBELNAYA FABRIKA. THE PARTNERS STARTED PRODUCING EUROPEAN STANDARD KITCHEN FURNITURE IN DIFFERENT PRICE CLASSES.

FOR THE RUSSIAN COMPANY, THIS SIGNIFIED A NEW LEVEL OF PRODUCTION AND THE COMPANY'S FURNITURE IS NOW DEVELOPED AND SUPPLIED TO SWISS STANDARDS.

YOUR RELIABLE PARTNER!



THE MOST ADVANCED FURNITURE PRODUCTION IN RUSSIA ACTIVELY WORKING IN THE B2C AND B2B MARKET SEGMENTS.



MORE THAN 200 PROJECTS HAVE BEEN FULFILLED FOR SUPPLYING FURNITURE FOR STATE AND COMMERCIAL FACILITIES.



PRODUCTS: FURNITURE FOR HOTELS, HEALTH FACILITIES, OFFICES, BANKS, RETAIL EQUIPMENT, KITCHENS AND FOR FACILITIES OF NATIONAL IMPORTANCE.



ECO-FRIENDLY MATERIALS, CONFIRMED BY RUSSIAN AND EUROPEAN QUALITY CERTIFICATES (GOST R 52078-2003, EN 120).



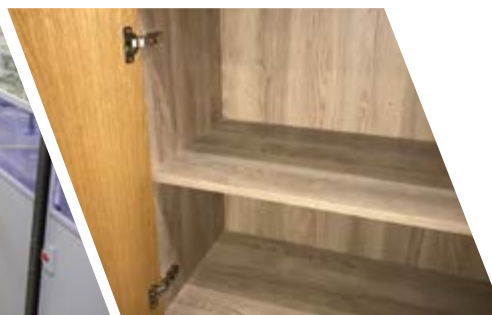
HIGH-QUALITY FITTINGS AND MATERIALS FROM FAMOUS EUROPEAN BRANDS: EGGER, BLUM, AND WHIRLPOOL.





FULLY AUTOMATED FURNITURE BODY ASSEMBLY
LINE: LIGMATECH RENNER LINE

01



AUTOMATED FURNITURE FAÇADE ASSEMBLY
LINE: ROVER C9

02



03

AUTOMATED BUFFER STORE: IMA MEINERT

PRODUCTION

04

AUTOMATED EDGING LINE: HOMAG U-LINE



CUTTING PLATE MATERIALS LINE:
SCHELLING

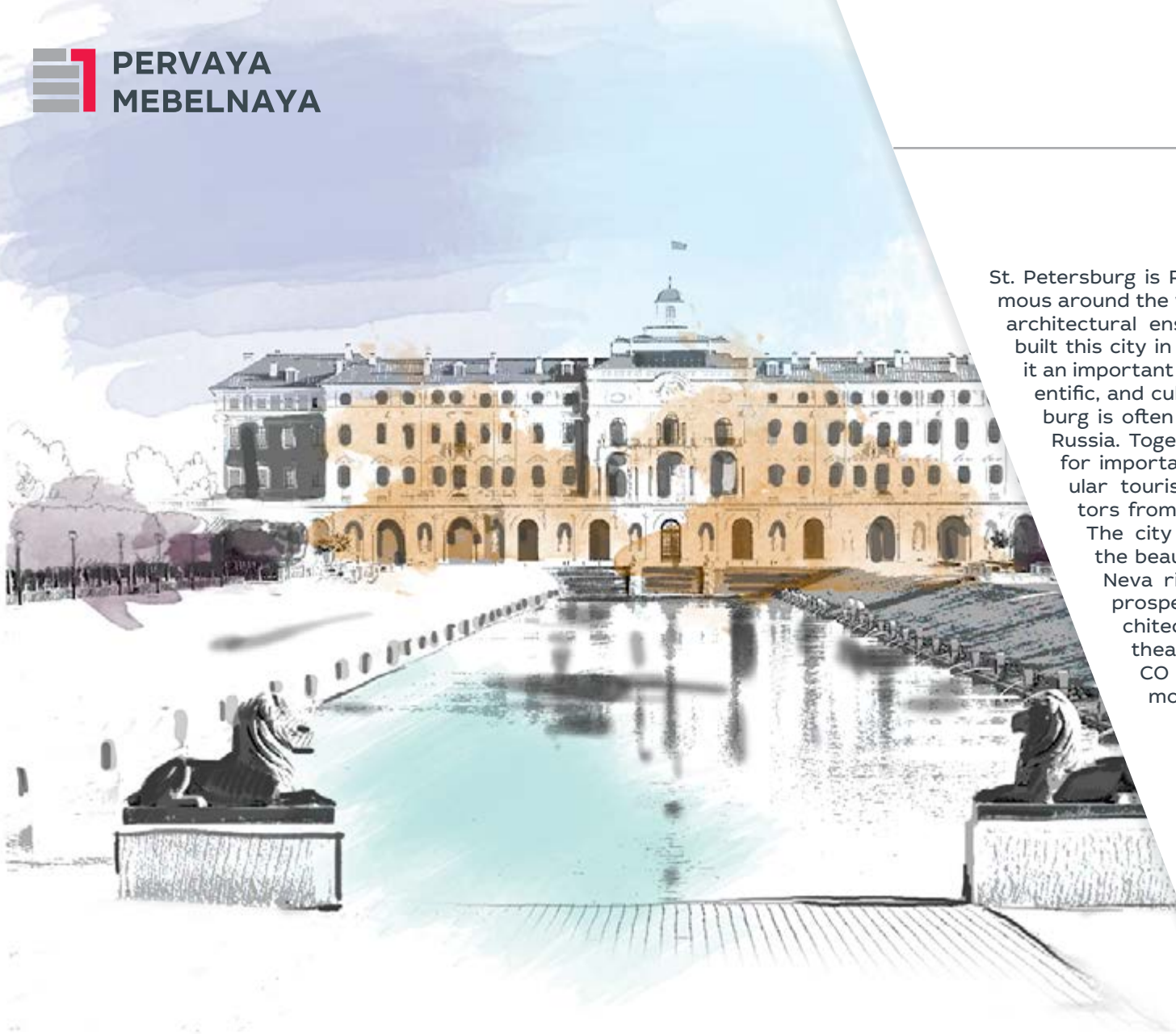


05



06

AUTOMATED PACKING LINE



St. Petersburg is Russia's second largest city, famous around the world for its unique beauty and architectural ensemble. Tsar Peter the Great built this city in the early 18th century, making it an important Russian economic, political, scientific, and cultural center. Today, St. Petersburg is often called the Northern Capital of Russia. Together with Moscow, it is a place for important national events. It is a popular tourist center, which attracts visitors from all over Russia and the world. The city has lots of wonderful sights: the beautiful raised bridges across the Neva river, the beautiful streets and prospects in the historical center, architectural monuments, museums, theatres (included in the UNESCO World Heritage list), and much more.

Saint Petersburg
Konstantin Palace

SUMMITS AND FORUMS

- INTERNATIONAL G 20 SUMMIT
- CASPIAN SUMMIT 2014
- SPIEF 2016
- BRICS AND SCO





SMALL MEETING HALL

INTERNATIONAL G 20 SUMMIT | St. Petersburg, Congress Palace

The G20 leaders' meeting was held in St. Petersburg in September 2013 in Konstantin Palace in the Congress Palace. It is located in Strelna historic park zone on the coast of the Gulf of Finland and is a working state residence created in 2001 by Decree of the President of the Russian Federation based on the historic residence of Romanov Grand Dukes. Today this complex is considered one of the most prestigious places for events of any level.

Pervaya Mebelnaya Fabrika was given the task of equipping the interiors of the palace for the G20 Summit. The high professional training and wide experience of our company's specialists made it possible to implement this project to the best international level. We fully furnished the press center, the Blue Hall, the Marble Hall, the offices of the heads of state and premises for bilateral negotiations. All the furniture within the project was made from materials that perfectly match the level of the event and are in complete harmony with the palace interiors.

Materials: veneer, solid wood, enamel



BIG MEETING HALL



CASPIAN SUMMIT 2014 | Astrakhan

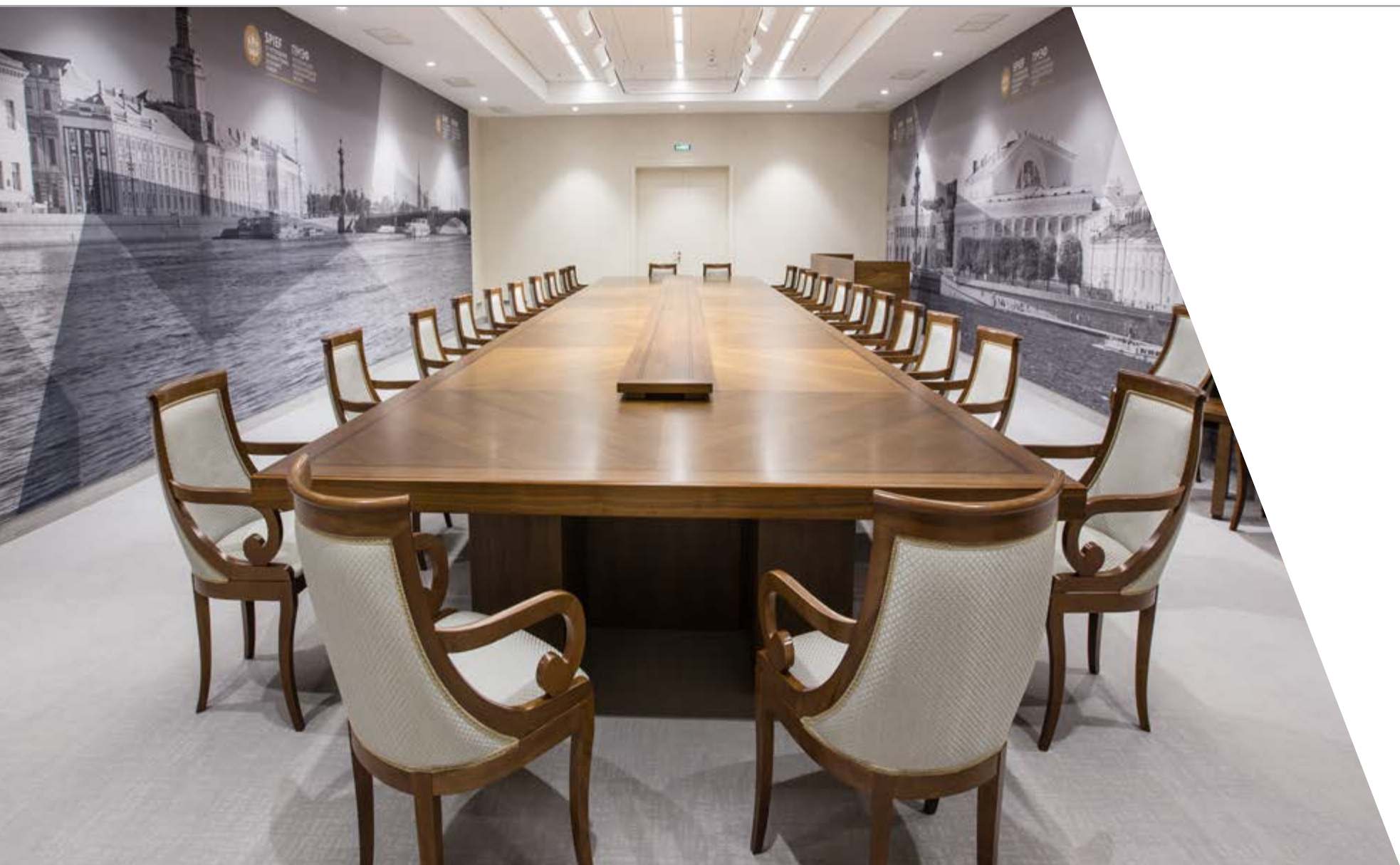
CONFERENCE HALLS FOR MEETINGS OF HEADS OF STATES

The IV Caspian Summit on the legal status of the Caspian Sea was held in September 2014 in Astrakhan. It was attended by the heads of all the Caspian states: Russia, Azerbaijan, Iran, Kazakhstan, and Turkmenistan.

Our company supplied ergonomic and elegant solid wood furniture for the meeting areas for the event's guests and participants. Supplying furniture for high-level meetings is not a minor task for any supplier. The quality must be perfect, the appearance should be stately, and the materials should emphasize the status of the event. The high quality of the supplied products and the availability of experienced interior designers allows Pervaya Mebelnaya Fabrika to meet the needs of VIP customers.

Materials: solid wood, veneer, fabric





SPIEF 2016 Expo Forum | St. Petersburg

CONFERENCE HALL FOR SPIEF 2016

The large-scale exhibition and business center Expoforum opened in St. Petersburg in 2014. The center was created for business and entertainment events - exhibitions, congresses, forums, sports and cultural events.

The largest event held here in 2016 was the St. Petersburg International Economic Forum.

Pervaya Mebelnaya Fabrika was involved in fully equipping the congress halls and VIP-zones for meetings at the SPIEF. This involved spaces for special status participants: the reception room, meeting halls and public areas.

Materials: natural veneer, laminated chipboard, fabric, leather.





BRICS AND SCO | Summit in Ufa

CONFERENCE HALLS FOR THE MEETING OF THE HEADS OF BRICS AND SCO STATES

Two major global events - SCO and BRICS summits- were held in July 2015 in the Russian city of Ufa. Both meetings were held in the building of the Congress Hall, which underwent major renovation and was fully equipped for the needs of these summits. Pervaya Mebelnaya Fabrika was responsible for furnishing all the premises: The offices of heads of state, the hall for the final press conference, the venue for the meeting of the BRICS countries leaders, the meeting halls for the SCO leaders in a narrow and expanded format, and the international press center.





BRICS AND SCO

CONFERENCE HALL FOR MEETINGS OF HEADS OF STATES

To create a strict but friendly atmosphere, our specialists chose light shades of warm colours. The participants' chairs met all the requirements regarding ergonomics and perfectly fit the interior due to the well-chosen forms and the high quality of materials.

Materials: solid wood, veneer, eco-leather



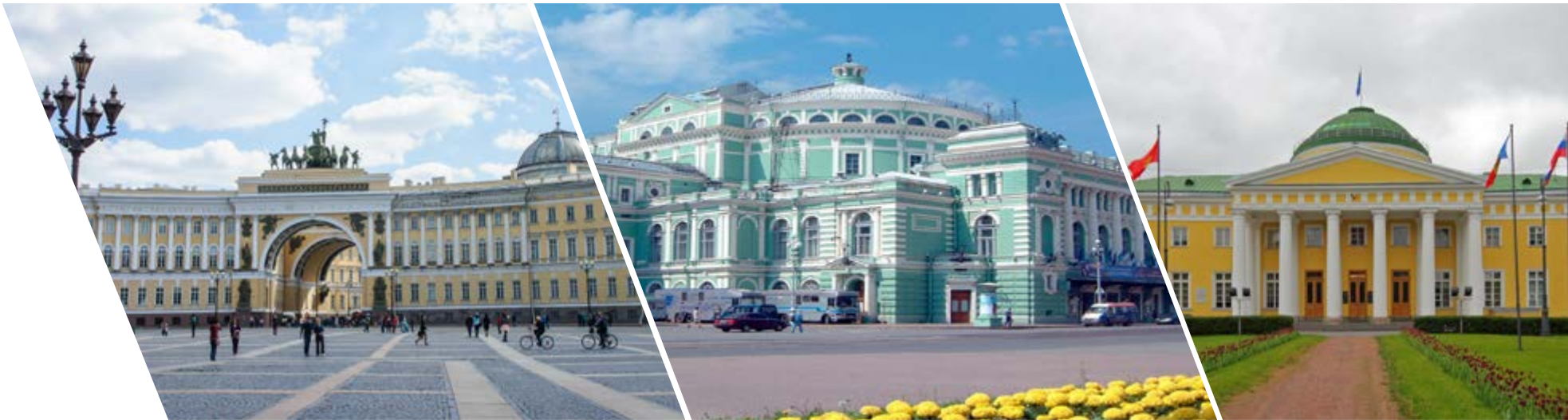


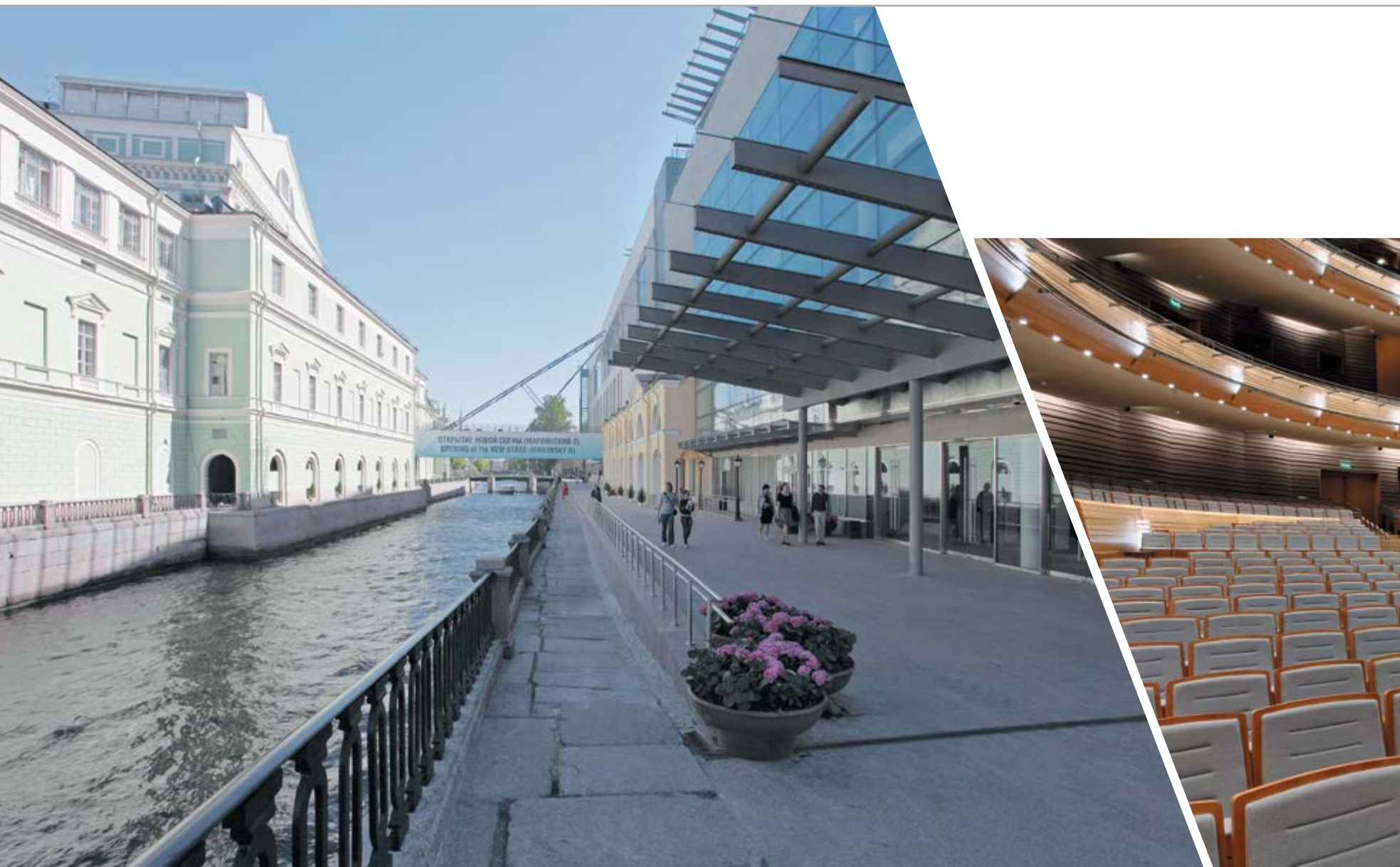
Pervaya Mebelnaya Fabrika contributes to and supports St. Petersburg's image. It participates in creating interiors for existing and new facilities. We are proud of the projects we have implemented for world class cultural facilities: Mariinsky-2, the State Hermitage, the Tauride Palace, for important political and economic events and international summits: G20 in St. Petersburg, BRICS and SOC summits in Ufa, and the Caspian summit in Astrakhan. We have supplied furniture for the oldest educational establishment in Russia: the Suvorov Military School, and much more. Our clients include European HoReCa chains: Hilton, Park Inn, Ibis St. Petersburg, and Four Seasons in St. Petersburg. Our specialists take on the most challenging jobs and provide the best solution within the shortest time.

St. Petersburg,
Vasilievsky island

CULTURAL FACILITIES

- MARIINSKY THEATRE / NEW STAGE
- STATE HERMITAGE
- TAURIDE PALACE





MARIINSKY THEATRE / NEW STAGE

One of the most ambitious architectural projects of recent years implemented in St. Petersburg was the construction of a new stage for the world-famous Mariinsky Theatre. Mariinsky-2 is part of the unique theatre and concert complex, one of the best-equipped theatre and concert venues in the world.

Pervaya Mebelnaya Fabrika was the main supplier of furniture for the auditorium, choral studios, restaurant, cafe, and cloakrooms.





CAFE ZONE, BAR

The project used high-quality materials - elegant expensive veneer, natural onyx, gently gleaming metal, and high-tech laminated chipboard. The designers thought about every detail, taking into account the style features, nuances of lighting, and the purpose of each piece of furniture.

Materials: natural veneer, onyx, laminated chipboard, fabric.





THEATRE SPACE





STATE HERMITAGE | St. Petersburg

General Staff Building of the State Hermitage Museum.

The General Staff building is one of St. Petersburg's most outstanding architectural monuments. It was built based on the project of the famous architect Carlo Rossi in the first half of the 19th century. This classical building completed the ensemble of Palace Square. At that time, the western wing of the building housed the military ministry - the General Staff - and the eastern wing housed the Ministry of Finance and the Ministry of Foreign Affairs. In 1988, the eastern wing of the General Staff building was transferred to the State Hermitage. In 2008, restoration of the facility began. It was completed in 2014 for the 250th anniversary of the Hermitage.

Restored rooms have preserved their historical decoration as much as possible. Pervaya Mebelnaya Fabrika was one of the companies involved in renovating the interiors. In full accordance with the customer's requests, we made, veneered, and assembled the entrance gates to the complex, doors in the halls, walls, wooden benches, bars made of beam, exhibition panels, and rotary systems. By using modern technologies, all materials fully correspond to the status level of the General Staff in terms of quality and appearance.

Materials: veneer, solid wood, varnish, enamel.





Tauride Palace, Beige Parlour | St. Petersburg

Tauride Palace was built in the late 18th century by the architect I. Starov as the residence of Prince G. Potemkin-Tavrichesky. Today, it houses the headquarters of the Inter-Parliamentary Assembly of the Member States of the Commonwealth of Independent States. The new interior of the palace's Beige Parlour is a very important and milestone project for Pervaya Mebelnaya Fabrika. Our company is happy to embody the boldest ideas. Supplying furniture for historical buildings is one of such projects: it is not only necessary to provide high quality of furniture, but also to show creative abilities taking into account the style features of the premises.

To emphasize the historical atmosphere of the Beige Parlour, furniture was chosen which corresponds to the style of the epoch when the palace was built. Exhibition racks and cabinets are made of solid wood, tinted with white enamel. The curved shapes of the sofa bodies are in harmony with the gold-plated mirror frames. The elegant furniture decoration is perfectly combined with the decor of the doors and with stucco on the walls and ceiling.

Materials: solid wood, enamel.



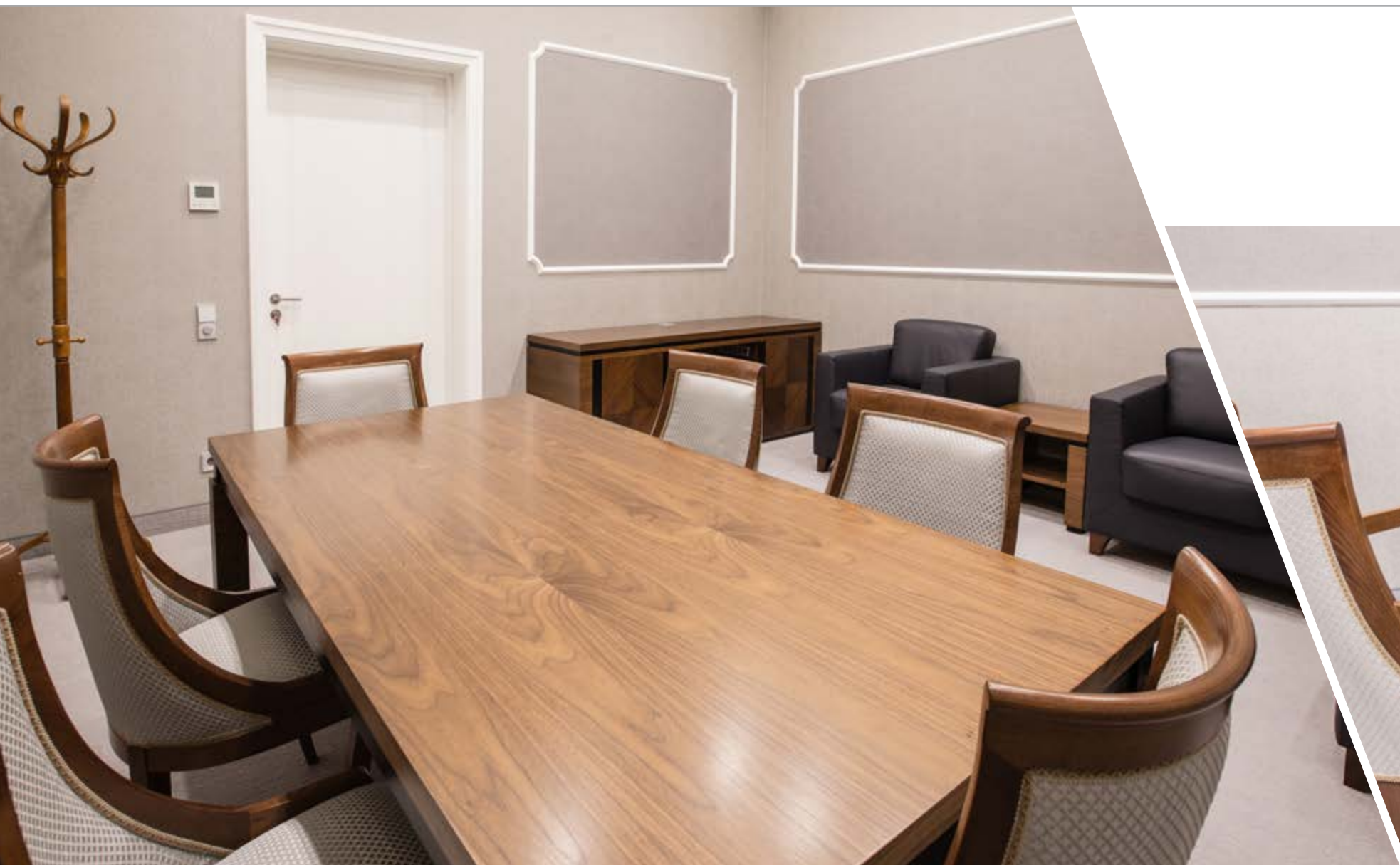


St. Petersburg
A monument to Peter I from Catherine II
Neva River Embankment

OFFICES

- VIP MEETING ZONE FOR SPIEF PARTICIPANTS
- GATCHINA GARDENS
- SUVOROV MILITARY SCHOOL



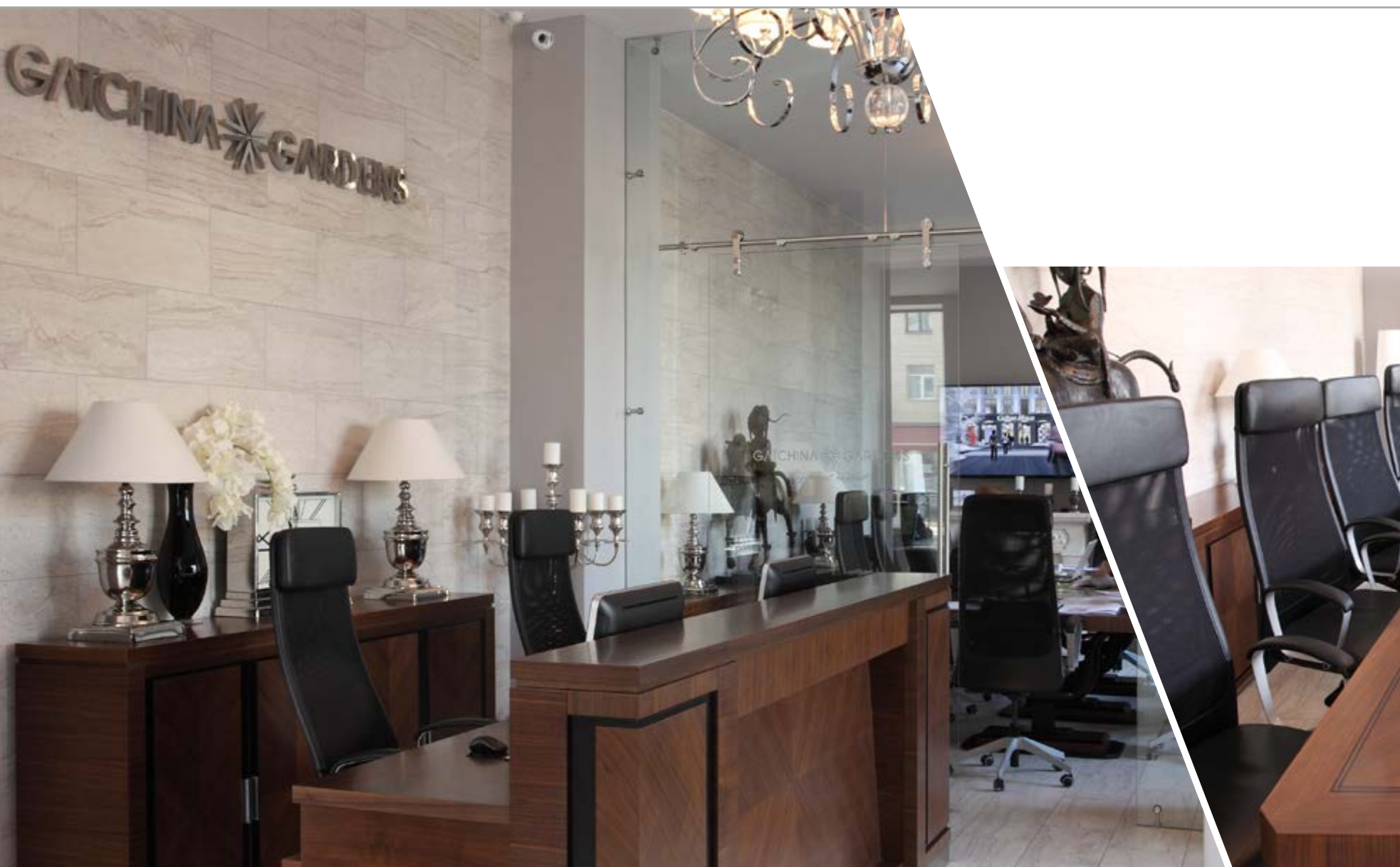


VIP MEETING ZONE FOR SPIEF PARTICIPANTS | St. Petersburg

The VIP meeting zone for SPIEF participants. This space is intended for special status participants. The designers selected the most effective materials to provide a solid and comfortable atmosphere: veneer “American walnut” for the facing of tables, cupboards, and interior doors; natural leather and hardwearing fabric for sofas and armchairs.

Materials: natural veneer, laminated chip board, fabric.

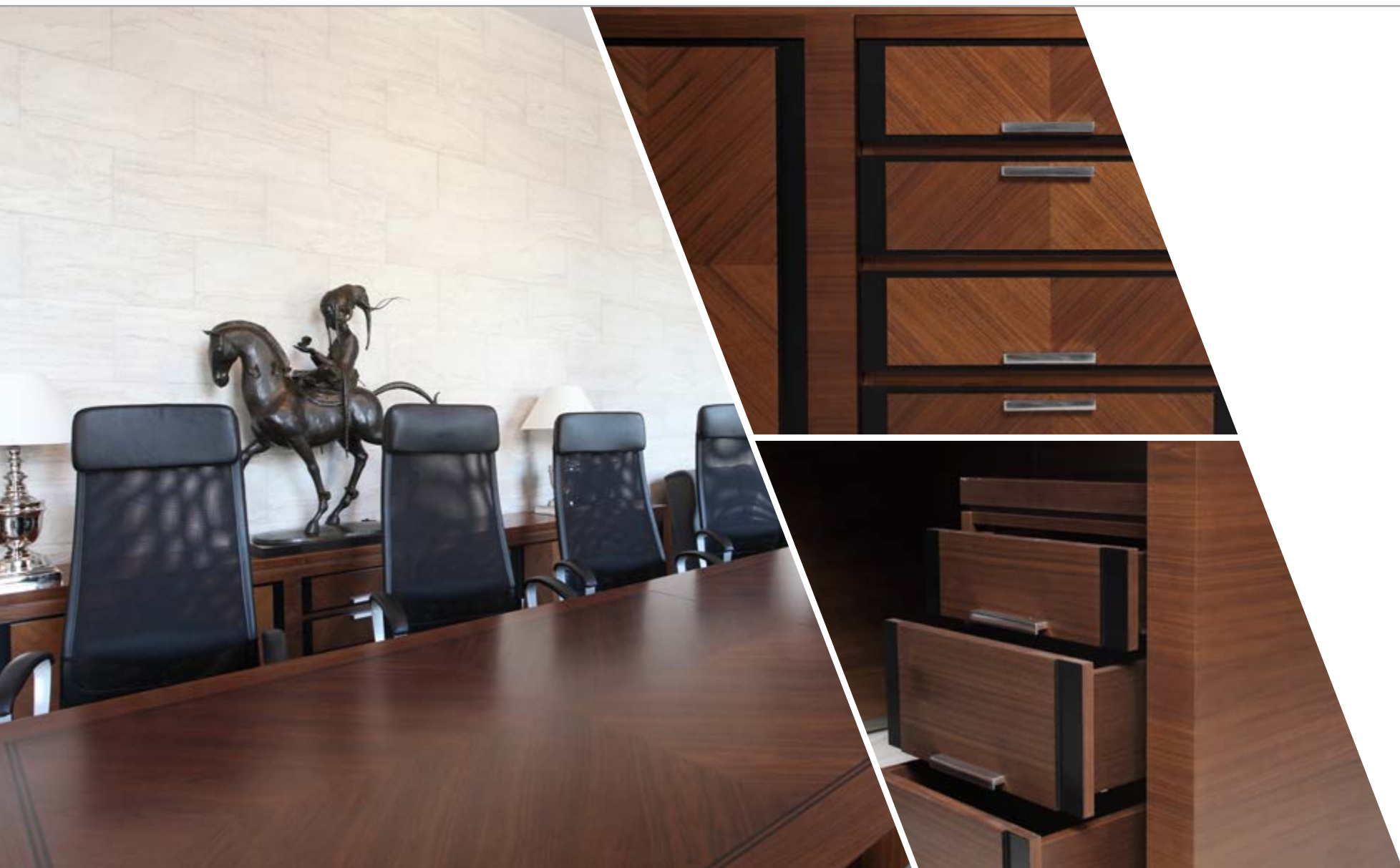




GATCHINA GARDENS | St. Petersburg

Pervaya Mebelnaya Fabrika is always eager to support up-to-date, promising, multifunctional projects such as the largest European media resort town Gatchina Gardens (covering 620 hectares). It is located on the outskirts of a unique monument of history and culture – the Great Gatchina Palace, which is included in the UNESCO World Heritage list. This project, unique in Russia, implements the idea of creating a special atmosphere of suburban resort real estate. It involves a combination of low-rise residential development, spa infrastructure, and high-tech public spaces.





OFFICES FOR MEETINGS AND STAFF

The designers of Pervaya Mebelnaya Fabrika were given the task of creating spectacular business interiors for the entrance area, as well as offices for employees and a meeting room. We chose the first impression approach: if guests see a strict but elegant setting, they will be inspired to carry out serious work, which means greater chance of successful talks. Such interiors increase the status of the complex itself.

Materials: natural veneer, fabric, leather.



DIRECTOR'S OFFICE



SUVOROV MILITARY SCHOOL | St. Petersburg

Pervaya Mebelnaya Fabrika has implemented lots of projects for many of the oldest and most famous organizations in St. Petersburg. Our customers include the St. Petersburg Suvorov Military School. This is a prestigious educational institution in Russia. For a long time, young men have been receiving a military education and appropriate upbringing here. The official opening ceremony for the new school campus was held in November 2017. The historical buildings of the complex were reconstructed, and the school was equipped with the most up-to-date educational and material equipment, including ergonomic furniture with increased environmental safety, which was supplied by Pervaya Mebelnaya Fabrika.





LIBRARY

We equipped the interiors of classrooms, the hall, the library, offices, meeting rooms and ancillary facilities. We found the balance between the solidity and comfort of the interior. This was done perfectly, every nuance was thought out: carved elements on large cabinets, elegant curved the legs, an interesting upholstery fabric pattern, echoing the carved patterns on the backs of the chairs.

Materials: laminated chipboard, edge ABS, MDF, chipboard, solid wood, natural veneer, plywood, metal frame, eco-leather, fabric, glass, safe, metal cabinets, duolite.





St. Petersburg,
English embankment

HOTELS

- HILTON EXPOFORUM
- DAGOMYS HEALTH COMPLEX
- PARK INN HOTEL





HOTELS HILTON EXPOFORUM | St. Petersburg ★★★★★

For Pervaya Mebelnaya Fabrika, work commissioned by Hilton Expoforum was an important experience in equipping a five-star hotel.

The furniture was made based on sketches by the well-known Swedish architectural bureau Lundwall architects, which fulfilled the general room design concept. In total, Pervaya Mebelnaya Fabrika supplied more than 1300 items - bedrooms, dressing rooms, kitchens, working areas, as well as furniture for people with special-needs.





HOTEL ROOMS

THE PROJECT INVOLVED FURNISHING:

- 234 hotel rooms
- 22 executive Suites
- 46 suites
- 166 standard rooms





MATERIALS

The exterior decoration of the furniture is mainly rosewood veneer, while the interior surfaces of the dressing rooms were lined with decorative eggplant coloured paper laminate. The materials were chosen by our technologists based on the high demands of the Hilton brand for the quality and environmental friendliness of the materials.

So, for example, the paper laminate used for interior decoration is made from craft paper.





DAGOMYS HEALTH COMPLEX | Sochi, Lazarevsky district

The Dagomys hotel complex is one of the facilities built for the Sochi 2014 Olympics. Specialists from Pervaya Mebelnaya Fabrika supplied furniture for the hotel's rooms and public areas.

The well-thought-out stylish interiors of the restaurants, bars, cinema and concert hall and other recreation areas were created thanks to the meticulous and coordinated teamwork of Pervaya Mebelnaya Fabrika. Various materials were used to manufacture the furniture and interior items.





HOTEL ROOMS

THE PROJECT INVOLVED FURNISHING:

1003 hotel rooms, including

121 Deluxe rooms

300 Suites

500 Standard rooms

80 Duplex rooms

2 Rooms for guests with special needs



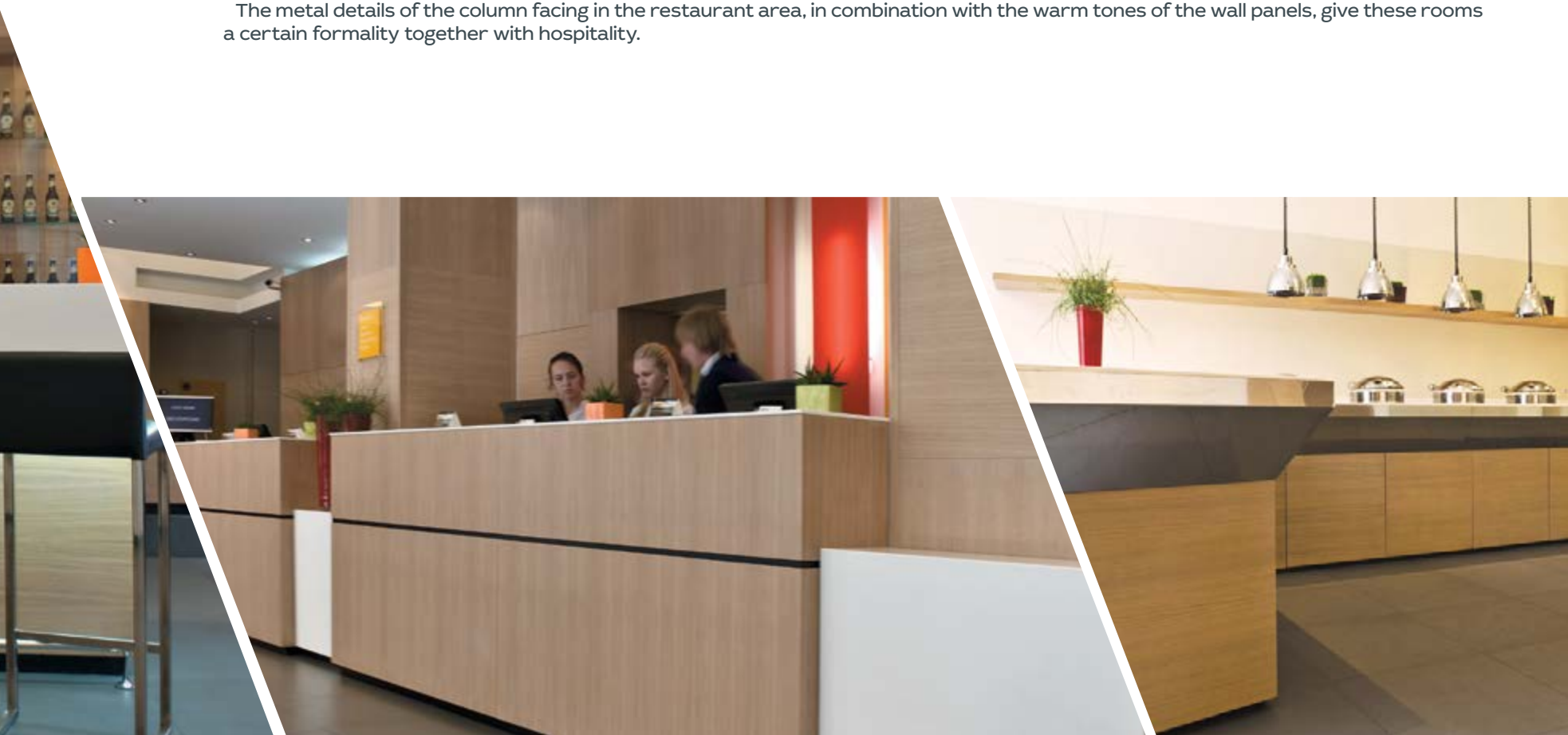


HOTEL PARK INN | St. Petersburg

Our designers created the interiors of the Park Inn hotel chain based on the fact that a book is judged by its cover. St. Petersburg always provides its guests with plenty of enjoyment, and the hotel must support these positive emotions.

The furniture created for Park Inn is made of spectacular external and reliable in terms of quality materials. Bleached oak veneer matches the saturated monophonic colours of walls, curtains and other decor elements.

The metal details of the column facing in the restaurant area, in combination with the warm tones of the wall panels, give these rooms a certain formality together with hospitality.





HOTEL ROOMS

THE PROJECT INCLUDED FURNISHING 271 HOTEL ROOMS

- 271 hotel rooms
- 50 Junior Suite rooms
- 21 business-class rooms
- 200 standard rooms

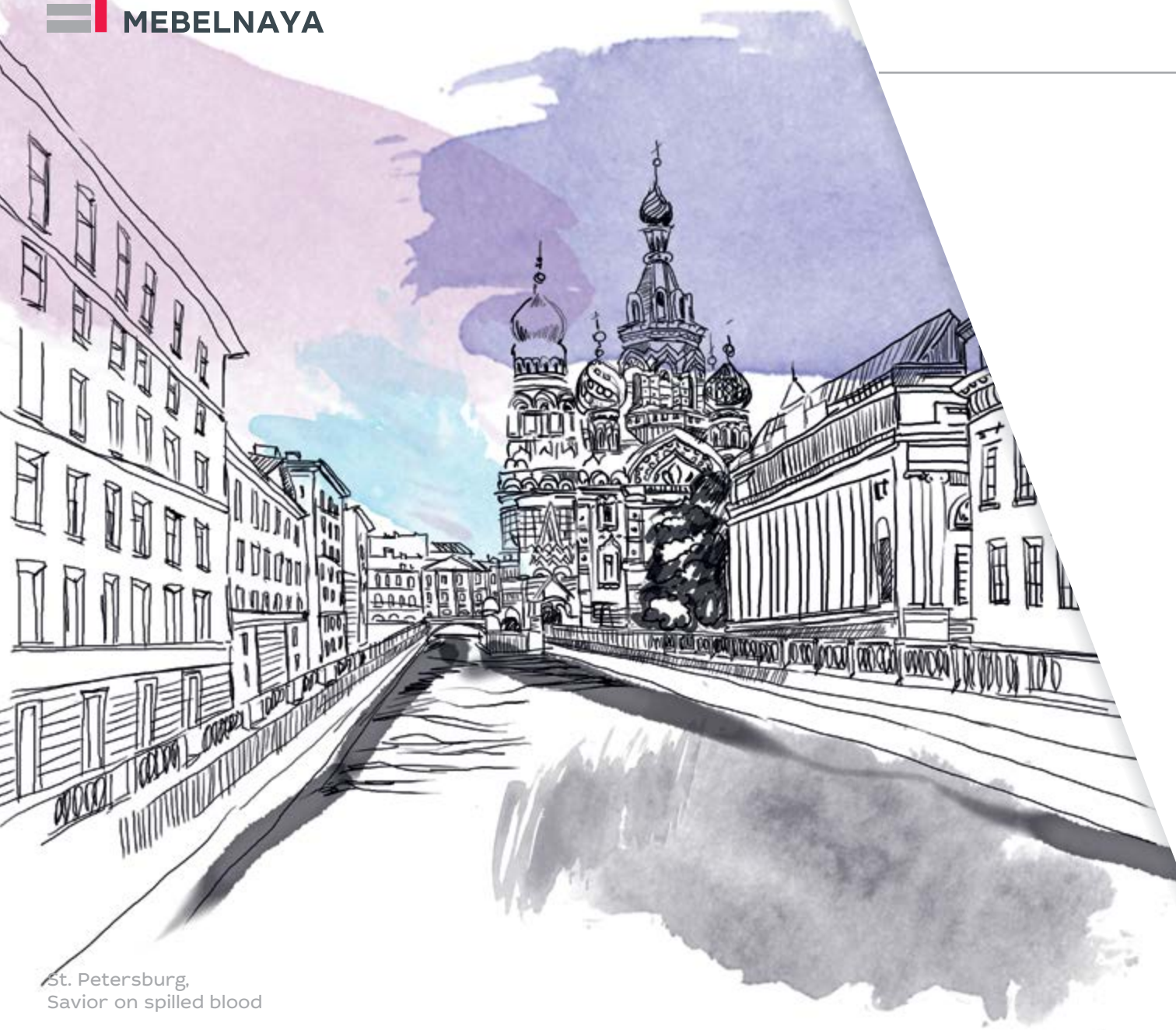




MATERIALS

Italian ALPI veneer «bleached oak», metal.





St. Petersburg,
Savior on spilled blood

APARTMENTS AND PRIVATE INTERIORS

AN IMPORTANT COMPONENT OF PERVAYA MEBELNAYA FABRIKA'S PORTFOLIO IS FURNISHING APARTMENTS AND ROOMS IN HOTELS AND PRIVATE HOUSES. WE IMPLEMENT VARIOUS PROJECTS IN DIFFERENT STYLES, TAKING INTO ACCOUNT THE CUSTOMERS' WISHES AND ARCHITECTURAL FEATURES OF THE PREMISES. PLEASE LOOK AT THE PHOTO GALLERY OF SEVERAL REALIZED PROJECTS.





APARTMENTS

The original reading of modern forms and the interaction of warm shades are the main principle of designing these apartments. One of the main roles here is played by veneered facades with an interesting combination of horizontally directed parts with vertical fibres of the central element. In the presented combination, they are used in the closed part of the kitchen, while open areas have smooth beige facades with illumination. This combination visually divides the space, but at the same time creates a feeling of a single whole.

The general theme of this duet is highlighted by details: the single-coloured base, clear lines and handles in stainless steel unobtrusively accentuating the architecture of the model. The kitchen can also be presented in a with non-handle opening.

Materials: facades: MDF veneered with "Butternut natural" veneer, thickness 19 mm. Case: laminated chipboard, thickness 16 mm





APARTMENTS

The rhythm of life in modern megacities and Zaha Hadid's unique architecture inspired the designers of Pervaya Mebelnaya Fabrika to create these apartments. Contrasting lines of the facades seem to permeate the space.

The curved breakfast bar countertop made of artificial stone effectively replicates the façade's plasticity. 'Space' supports fashion trends: as part of the kitchen's integration with the living room, a TV is built into the wall panel, which makes it easy to view from the breakfast bar.

The 6-colour palette gives freedom for both implementation of whole images and the addition of expressive accents. The facade can be either chosen as one-piece or assembled from three elements (facade with a linear pattern). Such a kitchen will certainly please creative people, people of strong character, and those who aspire to successes and victories.

Materials: MDF, matte enamel.





APARTMENTS

The interior space of Bridge is a special collaboration project between Pervaya Mebelnaya Fabrika and the famous Italian architect Simone Micheli. Dynamics and expression, an amazing combination of irrational and practical, a game of colours and unusual shapes - all this was reflected in this masterpiece by the famous master. Glossy facades act as a spectacular contrasting duet with a natural relief surface of a stone countertop. Originality and extraordinary ease, typical in Micheli's works, are also realized in the kitchen layout: there is an island in the center that seems to be framed by two functional cases. An additional emphasis in the overall picture is brought by designer aluminium handle-profiles that can be made in metal or painted black or white.

Materials: MDF lined with plastic gloss, metal.





APARTMENTS

The vintage furniture style always resonates with our customers and creates an atmosphere of comfort and warmth. The facade consists of two elements: the frame and the elegantly protruding central part, which is an interesting alternative to the classic sunk panel.

Elements of oak wood – an open section and a breakfast counter – provide the atmosphere with a sense of romance. Authentic handles with the aged-metal effect and frosted glass with graphics, as a wall panel are mandatory elements of the style.

Materials: MDF, matte enamel, solid oak.





APARTMENTS

Everybody has their own associations with English style apartments: some will think of good mystery stories, some of unique English humour, some will imagine foggy London, and some will think of the furnishings of stylish restaurants and pubs. The details create the image: the shaping of the door imitates the set-in facade, and the handles “as if on an old chest” add atmospheric strokes to the overall picture.

This style attracts those who do not like to overload the space: the upper part is not loaded as in usual classic kitchens. Open shelves on brackets and well-equipped niches help to maintain a sense of lightness without harming functionality.

Materials: MDF, PVC primer, matte enamel



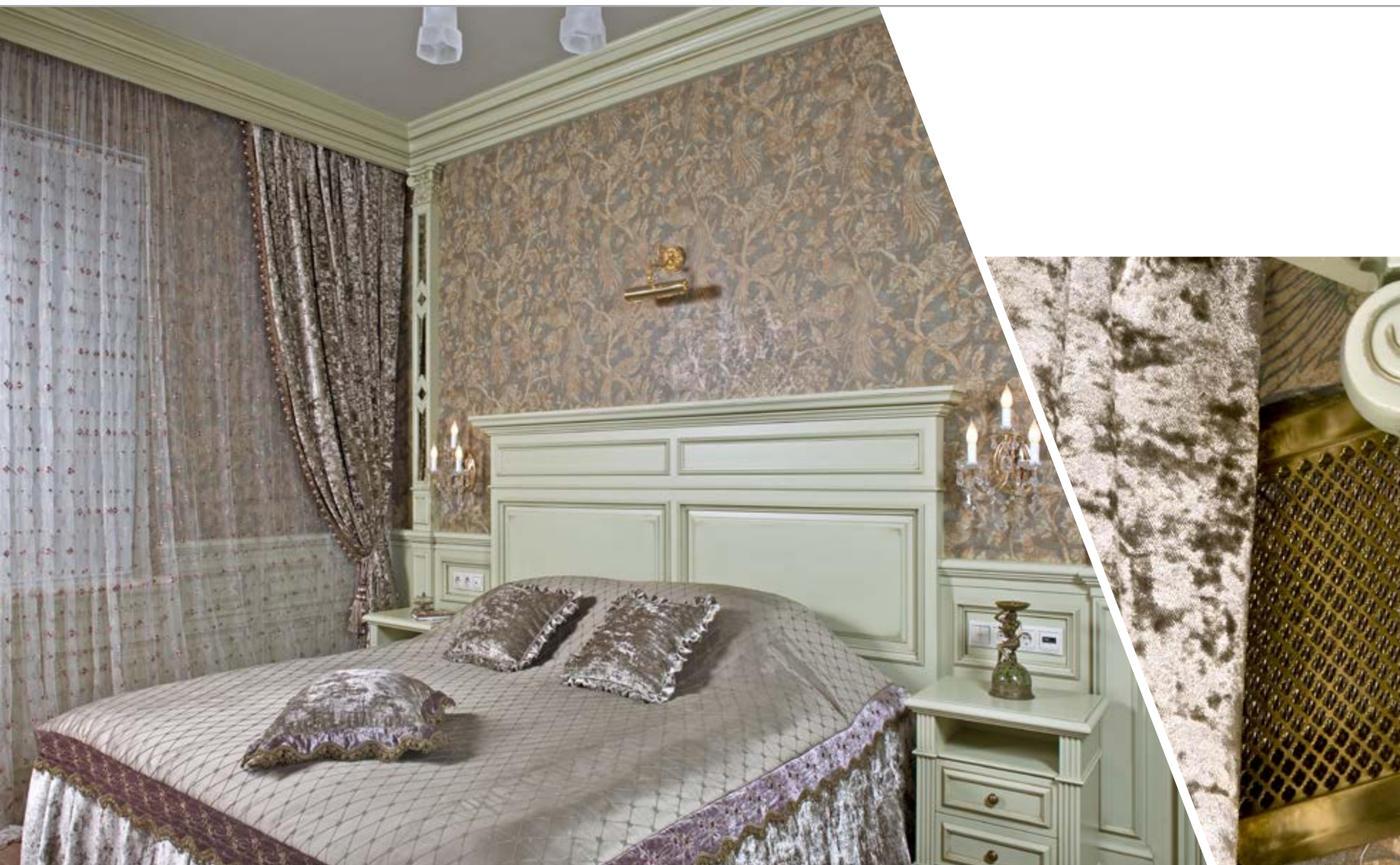


APARTMENTS

The interior of the apartments is set out in an art-deco style, which includes strict patterns, geometrical shapes, and rich colours of modern materials. The open shapes create a light interior and functional comfort. Everything is neat and practical.

Materials: acrylic gloss facade with different colour solutions, laminated chipboard body.





APARTMENTS

Romantic and elegant bedroom interior. There are no unnecessary details, only separate accents and the feeling of airiness. Patinated veneer stresses the overall classical style.

Materials; patinated veneer.





APARTMENTS

Apartments in a classical romantic style. The exclusive design of interior doors, doorways, archways, columns has been specially designed for this house. The other rooms were a successful continuation of this style.





MATERIALS

Solid patinated tinted ash, plastic, laminated chipboard, lined with Egger plastic, artificial stone.





APARTMENTS

At the customer's request, an exclusive design was developed for furniture, interior doors, doorways, archways, and decorative elements for all rooms in this house.

Materials: solid wood, veneer, stone.





APARTMENTS

The living room in a classical style reflects the high status of its owner. Veneer walls, decorative facades, and interior doors are made by Pervaya Mebelnaya Fabrika specialists from natural American walnut. The joints between the panels are decorated with solid wood mouldings. The caisson-type ceiling is made from natural plywood, with American walnut veneer and a tinted coating. The furniture is made using shaped veneer, and supporting elements are made by shaping solid American walnut.

Materials: natural solid and veneer American walnut, mirror, tinted glass.







The priority area for the company's growth: development of new innovative modern furniture models.

Our company's specialists will be happy to send you a business proposal. We ensure that your order is prepared and delivered on time.

St. Petersburg
St Isaac's Cathedral, Nicolas the first monument

4 Mebelny proezd,
Saint Petersburg,
RUSSIA 197374
+7 (812) 244-90-41
sales@1mf-alno.ru
www.1mf.ru



 **PERVAYA
MEBELNAYA**

Since 1945